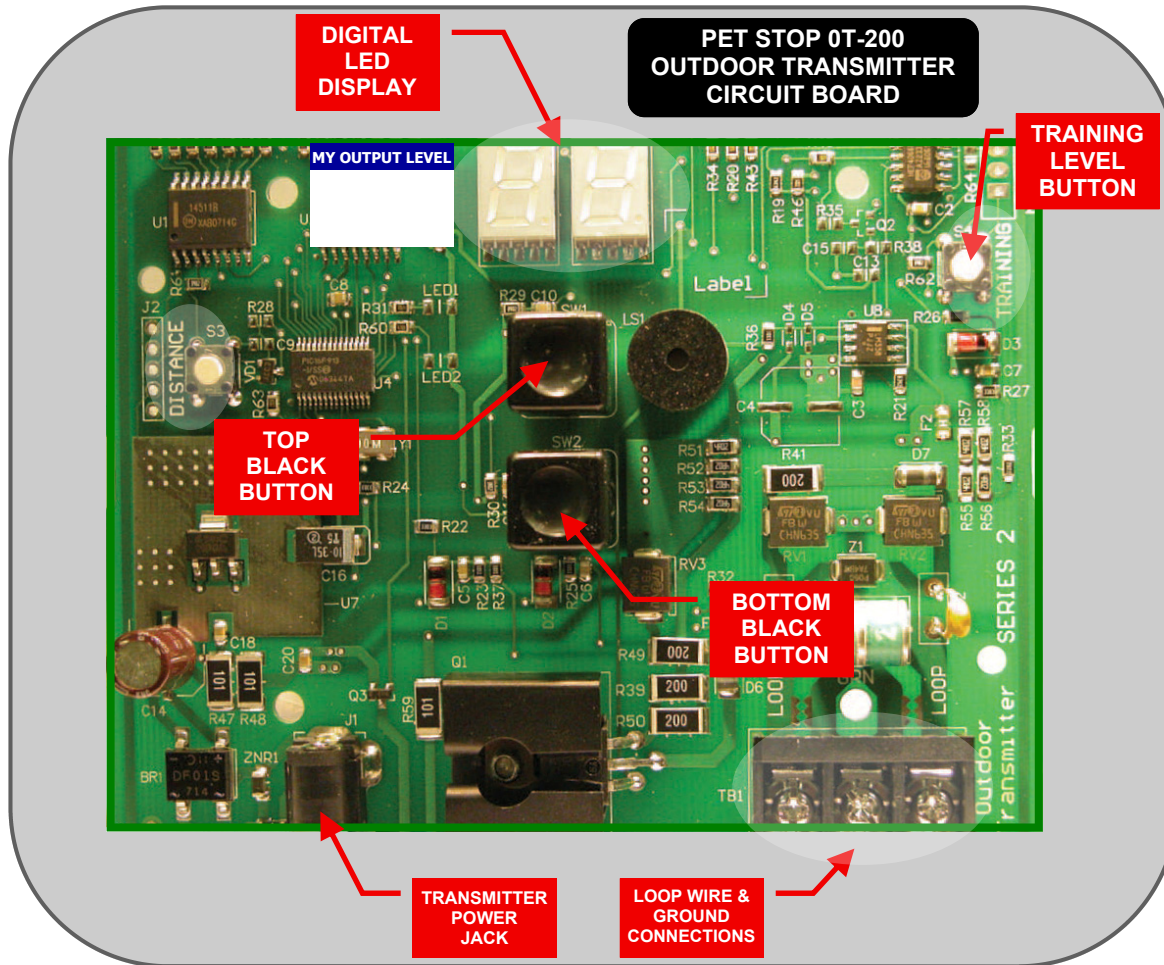


# Training Level Adjustment Instructions

## For Use During GentleSteps™ Training Week One



### STEP ONE

Press and Hold the **TRAINING LEVEL BUTTON** for a couple of seconds, till the **DIGITAL LED DISPLAY** begins to flash '98'.

### STEP TWO

Bring the Receiver you want to program near the center of the circuit board, about 3 inches in front of the **BLACK BUTTONS**. When in range, the receiver's red LED will light. When it does, hold it in place for the next step.



### STEP THREE

While the receiver's light is on, Press the **TOP BLACK BUTTON** once quickly. The **DIGITAL LED DISPLAY** returns to its normal readout. The receiver will beep, then flash the new training level.

# ALABAMA PET STOP

PET FENCE SYSTEMS

The Pet Fence Experts™ Since 1994

[www.PetStopAlabama.com](http://www.PetStopAlabama.com)

**205.982.5196**  
**888.740.3644**

The LED Digital Readout indicates the system's signal strength setting. IT DOES NOT INDICATE CORRECTION LEVEL. During Training Level Adjustments, the Digital Readout should not change. If it does change, correct it using the **BLACK BUTTONS** (top button increases the output level, bottom button decreases it). Remember to use treats generously during GentleSteps Training. If you have questions or need help programming the Training Levels, please call our office for assistance.